



**INTERNATIONAL
GEMOLOGICAL
INSTITUTE**

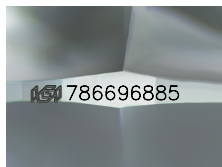
786696885



March 31, 2026
IGI Report Number 786696885
NATURAL DIAMOND
ROUND BRILLIANT
3.87 - 3.93 x 2.35 mm
Carat Weight 0.21 CARAT
Color Grade U-V
Clarity Grade VVS 1
Cut Grade EXCELLENT
Polish EXCELLENT
Symmetry EXCELLENT
Fluorescence NONE
Inscription(s) IGI 786696885
Comments: IDEAL CUT ROUND
BRILLIANT
Light Brown

DIAMOND REPORT

ELECTRONIC COPY



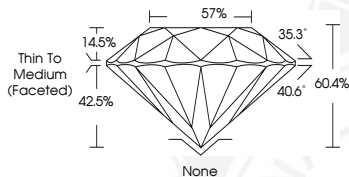
IGI 786696885

Sample Image Used

March 31, 2026
IGI Report Number 786696885
Description NATURAL DIAMOND
Shape and Cutting Style ROUND BRILLIANT
Measurements 3.87 - 3.93 x 2.35 mm

GRADING RESULTS

Carat Weight 0.21 CARAT
Color Grade U-V
Clarity Grade VVS 1
Cut Grade EXCELLENT



ADDITIONAL GRADING INFORMATION

Polish EXCELLENT
Symmetry EXCELLENT
Fluorescence NONE

Identification Features CLOUD
Inscription(s) IGI 786696885
Comments: IDEAL CUT ROUND BRILLIANT
Light Brown

COLOR

D - F	G - J	K - M	N - R	S - Z	FANCY
Colorless	Near Colorless	Slightly Tinted	Very Light Color	Light Color	

CLARITY

IF	WS ¹⁻²	VS ¹⁻²	SI ¹⁻²	I ¹⁻²
Internally Flawless	Very Very Slightly Included	Very Slightly Included	Slightly Included	Included

© IGI 2020, International Gemological Institute

FD - 10 20



March 31, 2026
IGI Report Number 786696885
NATURAL DIAMOND
ROUND BRILLIANT
3.87 - 3.93 x 2.35 mm
Carat Weight 0.21 CARAT
Color Grade U-V
Clarity Grade VVS 1
Cut Grade EXCELLENT
Polish EXCELLENT
Symmetry EXCELLENT
Fluorescence NONE
Inscription(s) IGI 786696885
Comments: IDEAL CUT ROUND
BRILLIANT
Light Brown